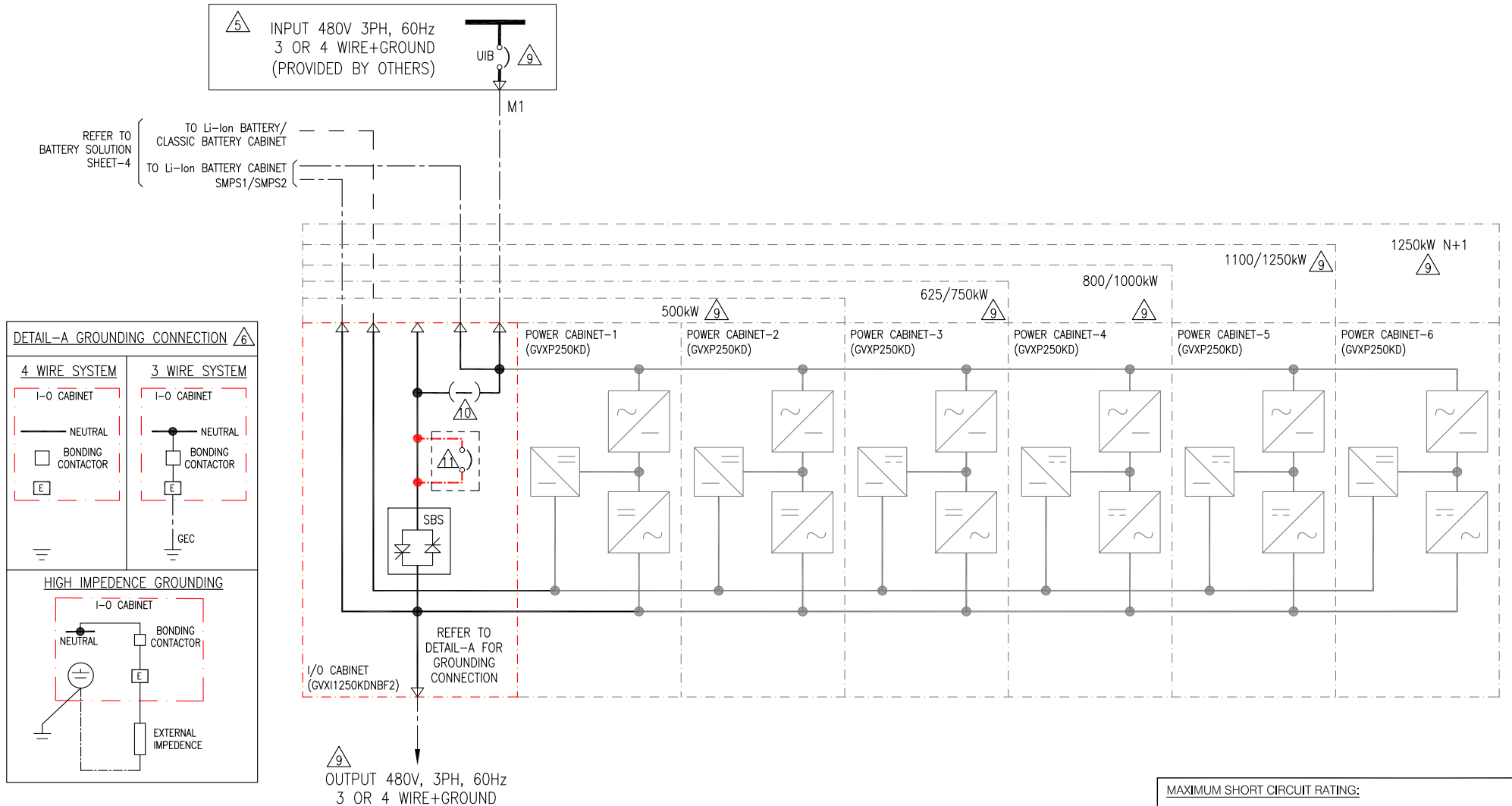


# 1 UPS SYSTEM WITHOUT MBP – SINGLE MAINS



**MAXIMUM SHORT CIRCUIT RATING:**

65 kA I<sub>cw</sub> : WITHOUT BACKFEED BREAKER INSTALLED

100 kA RMS : WITH PRE-INSTALLED BACKFEED BREAKER OR INSTALLED WITH BACKFEED KIT GVXOPT001

**LEGEND:**

— AC CABLE (PROVIDED BY OTHERS)

--- 500VDC CABLE (PROVIDED BY OTHERS)

- - - AC CABLE (OPTIONAL)

## NOTES:

1. INSTALLATION SHALL COMPLY WITH ALL APPLICABLE LOCAL AND NATIONAL ELECTRICAL CODES.
2. REFER TO PRODUCT INSTALLATION DOCUMENTATION FOR SITE PREPARATIONS.
3. DRAWING DEPICTS POWER SYSTEM CONNECTIONS AND IS NOT REPRESENTATIVE OF PHYSICAL LAYOUT.
4. FINAL SELECTIONS ARE RESPONSIBILITY OF ENGINEER OF RECORDS BASED ON INSTALLED CONDITIONS AND SCC/SELECTIVE CO-ORDINATION/ARC-FLASH ANALYSIS.
5. WYE SOURCE-SOLID GROUNDING AND HIGH RESISTANCE GROUNDING SOURCES ARE SUPPORTED. CORNER(LINE)GROUNDING IS NOT SUPPORTED.
6. FOR DETAILED ILLUSTRATIONS REFER TO INSTALLATION MANUAL. THIS SYSTEM SHALL BE INSTALLED AS A SEPARATELY DERIVED SYSTEM IN ACCORDANCE WITH LOCAL AND NATIONAL ELECTRIC CODE ARTICLE 250.30(a)(3). THE GROUNDING ELECTRODE CONDUCTOR IS PROVIDED BY OTHERS.
7. DC CABLE RATINGS ARE SUPPLIED AS GUIDELINE RECOMMENDATION ONLY AND SHOULD NOT BE CONSIDERED SUBSTITUTED FOR REVIEW. COMPLIANCE WITH NATIONAL OR LOCAL ELECTRICAL CODES. CONSULT YOUR LICENSED ENGINEER OF RECORDS FOR SITE-SPECIFIC "10MS L/R TIME CONSTANT CALCULATIONS (V\_DROP 1VMIN)" FOR OVER-CURRENT PROTECTION AND RUNTIMES.
8. CABLE LUGS ARE PROVIDED BY OTHERS.
9. FOR SKU#, SPECIFICATIONS AND RATINGS REFER TO SHEET-5.
10. SINGLE FEED KIT IS PRE INSTALLED, WHICH NEEDS TO BE REMOVED FOR DUAL MAINS INSTALLATIONS.
11. USE BACKFEED PROTECTION FROM ONE OF THE BELOW:

- A) THE UPSTREAM BREAKER (WITH UNDER VOLTAGE OR SHUNT TRIP) TO STATIC SWITCH.
- B) OPTIONAL BACKFEED KIT SKU#:GVXOPT001 WHICH IS FIELD INSTALLABLE.

THIS DRAWING AND SPECIFICATIONS HEREIN ARE THE PROPERTY OF SCHNEIDER ELECTRIC AND SHALL NOT BE COPIED, REPRODUCED OR USED IN WHOLE OR IN PART, AS THE BASIS FOR THE MANUFACTURE OR SALE OF ITEMS WITHOUT WRITTEN PERMISSION FROM SCHNEIDER ELECTRIC. THIS DRAWING IS BASED UPON LATEST AVAILABLE INFORMATION AND IS SUBJECT TO CHANGE WITHOUT NOTICE.

**Schneider Electric**

**TITLE:** GALAXY VX  
Input-Output Cabinet Without Backfeed  
Input: 480V AC 3PH 60Hz  
Output: 480V AC 3PH 60Hz 500-1250kVA N+1  
System One Line Diagram-Single mains without MBP

**PROJECT:** DRAWINGS **SHEET** 1 OF 5

**DWG NO:** GVXI1250KDNBF2NGS-SD

**DRAWN BY:** RANJITHA 15-DEC-22

**ENGINEER:** LARS LINDHOLM 15-DEC-22

**APPROVED BY:** SOEREN ANDERSEN 15-DEC-22

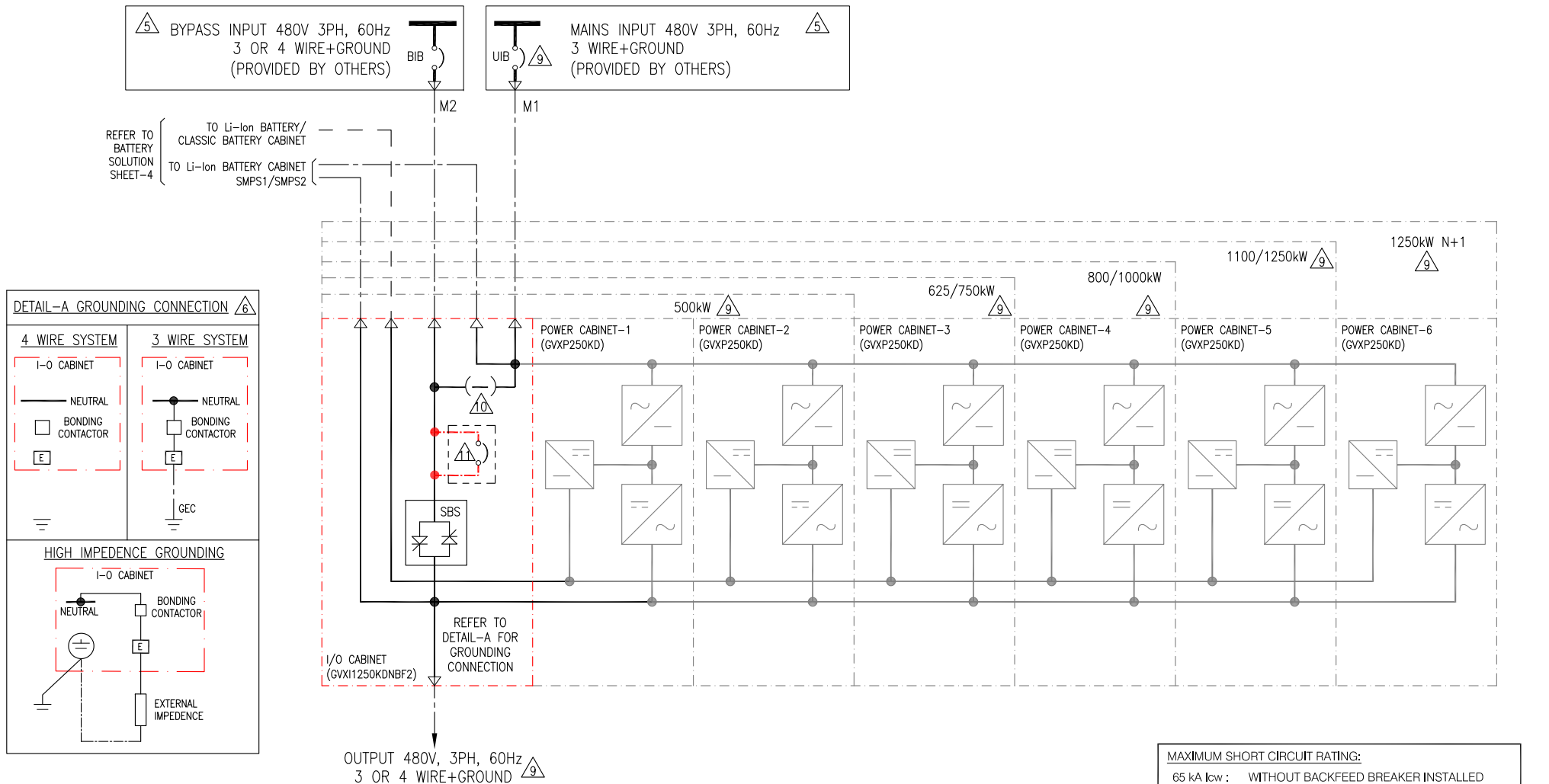
**REV.** 1

**ANGLE**

**PROJECTION**

**N.A.**

# 1 UPS SYSTEM WITHOUT MBP – DUAL MAINS



## NOTES:

1. INSTALLATION SHALL COMPLY WITH ALL APPLICABLE LOCAL AND NATIONAL ELECTRICAL CODES.
2. REFER TO PRODUCT INSTALLATION DOCUMENTATION FOR SITE PREPARATIONS.
3. DRAWING DEPICTS POWER SYSTEM CONNECTIONS AND IS NOT REPRESENTATIVE OF PHYSICAL LAYOUT.
4. FINAL SELECTIONS ARE RESPONSIBILITY OF ENGINEER OF RECORDS BASED ON INSTALLED CONDITIONS AND SCC/SELECTIVE CO-ORDINATION/ARC-FLASH ANALYSIS.
5. WYE SOURCE-SOLID GROUNDING AND HIGH RESISTANCE GROUNDING SOURCES ARE SUPPORTED. CORNER(LINE)GROUNDING IS NOT SUPPORTED.
6. FOR DETAILED ILLUSTRATIONS REFER TO INSTALLATION MANUAL. THIS SYSTEM SHALL BE INSTALLED AS A SEPARATELY DERIVED SYSTEM IN ACCORDANCE WITH LOCAL AND NATIONAL ELECTRIC CODE ARTICLE 250.30(a)(3). THE GROUNDED ELECTRODE CONDUCTOR IS PROVIDED BY OTHERS.
7. DC CABLE RATINGS ARE SUPPLIED AS GUIDELINE RECOMMENDATION ONLY AND SHOULD NOT BE CONSIDERED SUBSTITUTED FOR REVIEW. COMPLIANCE WITH NATIONAL OR LOCAL ELECTRICAL CODES. CONSULT YOUR LICENSED ENGINEER OF RECORDS FOR SITE-SPECIFIC "10MS L/R TIME CONSTANT CALCULATIONS (V\_DROP 1VMIN)" FOR OVER-CURRENT PROTECTION AND RUNTIMES.
8. CABLE LUGS ARE PROVIDED BY OTHERS.
9. FOR SKU#s, SPECIFICATIONS AND RATINGS REFER TO SHEET-5.
10. SINGLE FEED KIT IS PRE INSTALLED, WHICH NEEDS TO REMOVED FOR DUAL MAINS INSTALLATIONS.
11. USE BACKFEED PROTECTION FROM ONE OF THE BELOW:

- A) THE UPSTREAM BREAKER (WITH UNDER VOLTAGE OR SHUNT TRIP) TO STATIC SWITCH.
- B) OPTIONAL BACKFEED KIT SKU#:GVXOPT001 WHICH IS FIELD INSTALLABLE.

THIS DRAWING AND SPECIFICATIONS HEREIN ARE THE PROPERTY OF SCHNEIDER ELECTRIC AND SHALL NOT BE COPIED, REPRODUCED OR USED IN WHOLE OR IN PART, AS THE BASIS FOR THE MANUFACTURE OR SALE OF ITEMS WITHOUT WRITTEN PERMISSION FROM SCHNEIDER ELECTRIC. THIS DRAWING IS BASED UPON LATEST AVAILABLE INFORMATION AND IS SUBJECT TO CHANGE WITHOUT NOTICE.

**Schneider Electric**

**TITLE:** GALAXY VX  
Input-Output Cabinet Without Backfeed  
Input: 480V AC 3PH 60Hz  
Output: 480V AC 3PH 60Hz 500-1250kVA N+1  
System One Line Diagram-Dual Mains without MBP

**PROJECT:** DRAWINGS **SHEET** 2 OF 5

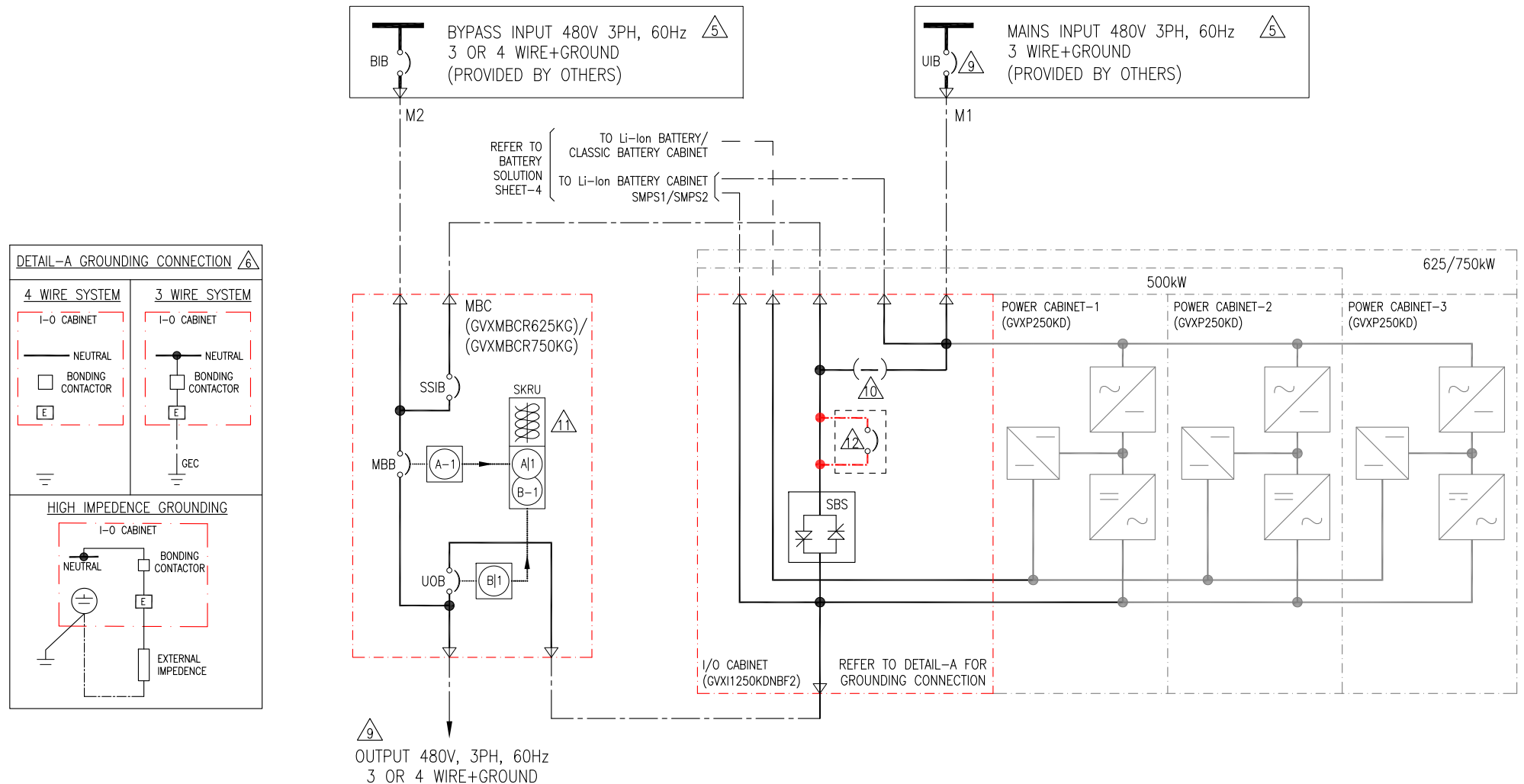
**DWG NO:** GVX11250KDNBF2NGS-SD **REV.** 1

**DRAWN BY:** RANJITHA **15-DEC-22** **ANGLE**

**ENGINEER:** LARS LINDHOLM **15-DEC-22** **PROJECTION**

**APPROVED BY:** SOEREN ANDERSEN **15-DEC-22** **N.A.**

# 1 UPS SYSTEM WITH MBP – DUAL MAINS



## NOTES:

1. INSTALLATION SHALL COMPLY WITH ALL APPLICABLE LOCAL AND NATIONAL ELECTRICAL CODES.
2. REFER TO PRODUCT INSTALLATION DOCUMENTATION FOR SITE PREPARATIONS.
3. DRAWING DEPICTS POWER SYSTEM CONNECTIONS AND IS NOT REPRESENTATIVE OF PHYSICAL LAYOUT.
4. FINAL SELECTIONS ARE RESPONSIBILITY OF ENGINEER OF RECORDS BASED ON INSTALLED CONDITIONS AND SCC/SELECTIVE CO-ORDINATION/ARC-FLASH ANALYSIS.
5. WYE SOURCE-SOLID GROUNDING AND HIGH RESISTANCE GROUNDING SOURCES ARE SUPPORTED. CORNER(LINE)GROUNDING IS NOT SUPPORTED.
6. FOR DETAILED ILLUSTRATIONS REFER TO INSTALLATION MANUAL. THIS SYSTEM SHALL BE INSTALLED AS A SEPARATELY DERIVED SYSTEM IN ACCORDANCE WITH LOCAL AND NATIONAL ELECTRIC CODE ARTICLE 250.30(a)(3). THE GROUNDING ELECTRODE CONDUCTOR IS PROVIDED BY OTHERS.
7. DC CABLE RATINGS ARE SUPPLIED AS GUIDELINE RECOMMENDATION ONLY AND SHOULD NOT BE CONSIDERED SUBSTITUTED FOR REVIEW. COMPLIANCE WITH NATIONAL OR LOCAL ELECTRICAL CODES. CONSULT YOUR LICENSED ENGINEER OF RECORDS FOR SITE-SPECIFIC "10MS L/R TIME CONSTANT CALCULATIONS (V\_DROP 1VMIN)" FOR OVER-CURRENT PROTECTION AND RUNTIMES.
8. CABLE LUGS ARE PROVIDED BY OTHERS.
9. FOR SKU#s, SPECIFICATIONS AND RATINGS REFER TO SHEET-5.
10. SINGLE FEED KIT IS PRE INSTALLED, WHICH NEEDS TO REMOVED FOR DUAL MAINS INSTALLATIONS.
11. KEY INTERLOCKS WITH SKRU, SCHEME 39, BETWEEN MBB& UOB ARE INCLUDED AS STANDARD WITH SYSTEM.
12. USE BACKFEED PROTECTION FROM ONE OF THE BELOW:
  - A) THE UPSTREAM BREAKER (WITH UNDER VOLTAGE OR SHUNT TRIP) TO STATIC SWITCH.
  - B) OPTIONAL BACKFEED KIT SKU#:GVXOPT001 WHICH IS FIELD INSTALLABLE.

THIS DRAWING AND SPECIFICATIONS HEREIN ARE THE PROPERTY OF SCHNEIDER ELECTRIC AND SHALL NOT BE COPIED, REPRODUCED OR USED IN WHOLE OR IN PART, AS THE BASIS FOR THE MANUFACTURE OR SALE OF ITEMS WITHOUT WRITTEN PERMISSION FROM SCHNEIDER ELECTRIC. THIS DRAWING IS BASED UPON LATEST AVAILABLE INFORMATION AND IS SUBJECT TO CHANGE WITHOUT NOTICE.

**Schneider Electric**

**TITLE:** GALAXY VX  
Input-Output Cabinet Without Backfeed  
Input: 480V AC 3PH 60Hz  
Output: 480V AC 3PH 60Hz 500-1250kVA N+1  
System One Line Diagram-Dual Mains with MBP

**DWG NO:** GVXI1250KDNBF2NGS-SD  
**DRAWN BY:** RANJITHA  
**ENGINEER:** LARS LINDHOLM  
**APPROVED BY:** SOEREN ANDERSEN

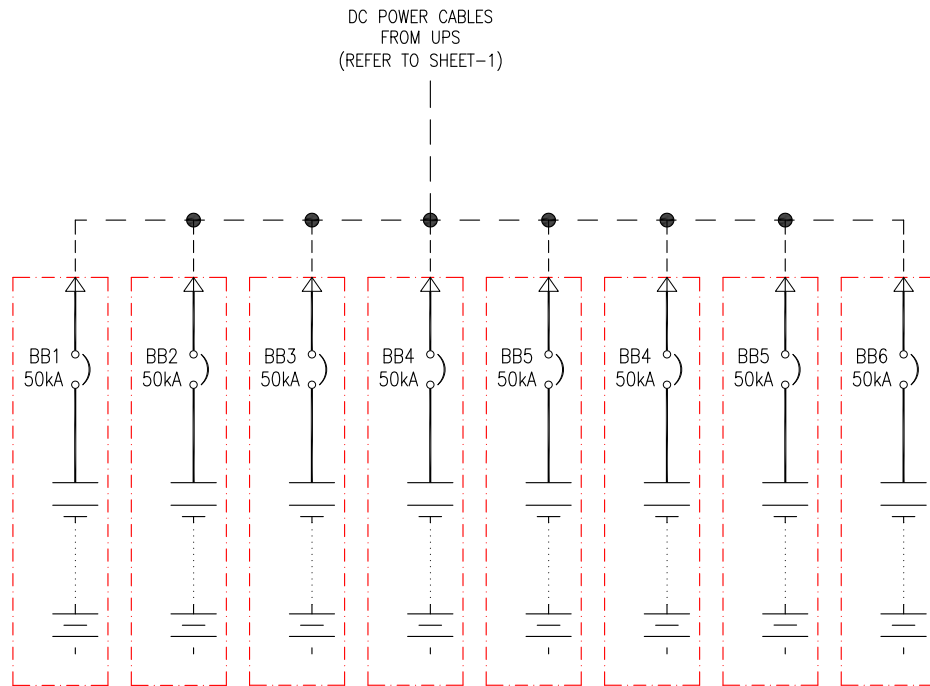
**REV.** 1  
**ANGLE**  
**PROJECTION**  
**N.A.**

## MAXIMUM SHORT CIRCUIT RATING:

65 kA Icw : WITHOUT BACKFEED BREAKER INSTALLED  
100 kA RMS : WITH PRE-INSTALLED BACKFEED BREAKER OR INSTALLED WITH BACKFEED KIT GVXOPT001

## LEGEND:

— AC CABLE (PROVIDED BY OTHERS)  
--- 500VDC CABLE (PROVIDED BY OTHERS)  
- - - AC CABLE (OPTIONAL)



CLASSIC BATTERY CABINETS ENGINEER TO ORDER SKUs  
(FOR DETAIL CONTACT SCHNEIDER ELECTRIC)

LEGEND:	
	AC CABLE (PROVIDED BY OTHERS)
	500VDC CABLE (PROVIDED BY OTHERS)

#### NOTES:

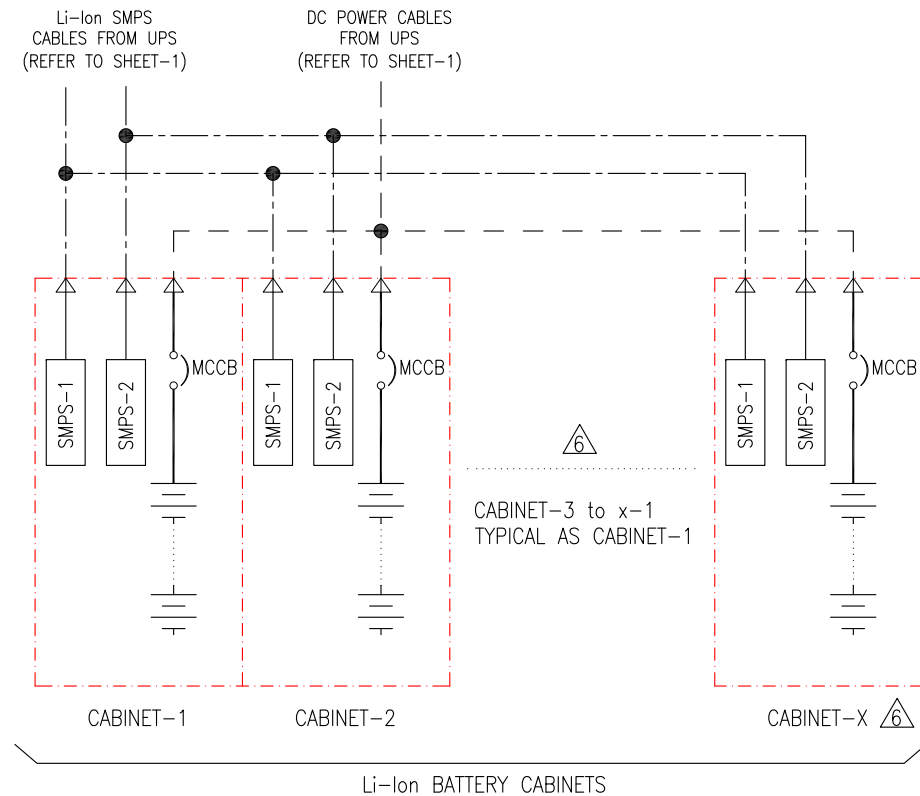
1. INSTALLATION SHALL COMPLY WITH ALL APPLICABLE LOCAL AND NATIONAL ELECTRICAL CODES.
2. REFER TO PRODUCT INSTALLATION DOCUMENTATION FOR SITE PREPARATIONS.
3. DRAWING DEPICTS POWER SYSTEM CONNECTIONS AND IS NOT REPRESENTATIVE OF PHYSICAL LAYOUT.
4. FINAL SELECTIONS ARE RESPONSIBILITY OF ENGINEER OF RECORDS BASED ON INSTALLED CONDITIONS AND SCC/SELECTIVE CO-ORDINATION/ARC-FLASH ANALYSIS.
5. CABLE LUGS ARE PROVIDED BY OTHERS.
6. REFER TO SHEET-5 FOR APPLICABLE NUMBER OF Li-Ion BATTERY RACKS FOR VARIOUS UPS RATINGS.

THIS DRAWING AND SPECIFICATIONS HEREIN ARE THE PROPERTY OF SCHNEIDER ELECTRIC AND SHALL NOT BE COPIED, REPRODUCED OR USED IN WHOLE OR IN PART, AS THE BASIS FOR THE MANUFACTURE OR SALE OF ITEMS WITHOUT WRITTEN PERMISSION FROM SCHNEIDER ELECTRIC. THIS DRAWING IS BASED UPON LATEST AVAILABLE INFORMATION AND IS SUBJECT TO CHANGE WITHOUT NOTICE.

**Schneider Electric**

**TITLE:** GALAXY VX  
Input-Output Cabinet Without Backfeed  
Input: 480V AC 3PH 60Hz  
Output: 480V AC 3PH 60Hz 500-1250kVA N+1  
System One Line Diagram-Battery Solution  
**PROJECT:** DRAWINGS **SHEET** 4 OF 5

<b>DWG NO:</b> GVXI1250KDNBF2NGS-SD	<b>REV.</b> 0
<b>DRAWN BY:</b> RANJITHA	10-NOV-22
<b>ENGINEER:</b> LARS LINDHOLM	11-NOV-22
<b>APPROVED BY:</b> SOEREN ANDERSEN	11-NOV-22
	ANGLE PROJECTION
	N.A.



Li-Ion BATTERY CABINETS

GALAXY VX 1250KW IN-OUT CABINET WITH UPS AND BATTERIES SYSTEM SITE PLANNING DATA

MAINS INPUT (SINGLE MAINS): 480V AC, 60HZ 3PH, 3 OR 4 WIRE+G || BYPASS INPUT: 480V AC, 60HZ, 3PH, 3 OR 4 WIRE+G OUTPUT: 480V AC, 60HZ, 3PH, 3 OR 4 WIRE+G ||  
MAINS INPUT (DUAL MAINS): 480V AC, 60HZ 3PH, 3 WIRE+G || NOMINAL DC VOLTAGE: 480V DC (LI-ION BATTERY / CLASSIC BATTERY CABINET(ENGINEER TO ORDER))

INPUT/ OUTPUT CABINET	SYSTEM OUTPUT CAPACITY (kW)	APPLICABLE NUMBER OF POWER CABINETS (GVXP250KD)	WITH REDUNDANT POWER CABINETS	APPLICABLE CLASSIC BATTERY CABINET	APPLICABLE MAINTENANCE BYPASS PANEL SKUs	NOMINAL MAINS INPUT CURRENT (A) @480V AC	MAXIMUM MAINS INPUT CURRENT(A) @480V AC	BYPASS INPUT CURRENT(A) @480V AC	UPS / SYSTEM OUTPUT CURRENT (A) @480V AC	BATTERY CURRENT (A DC)	
										@FULL LOAD CURRENT AND NOMINAL BATTERY VOLTAGE	@FULL LOAD CURRENT AND MINIMUM BATTERY VOLTAGE
GVXI1250KDNBF2	500	2	0	ENGINEER TO ORDER ITEM (CONTACT SCHNEIDER ELECTRIC FOR DETAILS)	GVXMBCR625KG/ GVXMBCR750KG	633	728	606	601	1090	1362
		3	N+1		GVXMBCR750KG	633	728	606	601	1090	1362
	625	3	0		GVXMBCR625KG	791	910	757	752	1362	1703
	750	3	0		GVXMBCR750KG	950	1092	909	902	1634	2043
		4	N+1		ENGINEER TO ORDER ITEM (CONTACT SCHNEIDER ELECTRIC FOR DETAILS)	950	1092	909	902	1634	2043
	800	4	0			1013	1165	969	962	1743	2179
	1000	4	0			1266	1456	1211	1203	2179	2724
		5	N+1			1266	1456	1211	1203	2179	2724
	1100	5	0			1393	1602	1332	1323	2397	2996
		6	N+1			1393	1602	1332	1323	2397	2996
	1250	5	0			1583	1820	1514	1504	2724	3405
		6	N+1			1583	1820	1514	1504	2724	3405

LI-ION BATTERY RACK  
APPLICABILITY FOR VARIOUS UPS RATINGS

4

UPS RATING (kW)	MINIMUM – MAXIMUM NUMBER OF RACKS
500	3 – 5
625	3 – 7
750	4 – 8
800	5 – 8
1000	5 – 8
1100	6 – 7
1250	6 – 7

RECOMMENDED UPSTREAM OVERCURRENT  
PROTECTION DEVICE RATINGS

OCPD RATING AT	RECOMMENDED OVER CURRENT PROTECTION Ir RATING (A)			
	MAINS INPUT	BYPASS INPUT	OUTPUT	BATTERY
500	800*	700*	700*	1600**
625	1000*	800*	800*	2000**
750	1200*	1000*	1000*	2500**
800	1600***	1000*	1000*	2500**
1000	1600*	1600***	1600***	3000*
1100	2000**	1600**	1600**	3000*
1250	2000*	1600*	1600*	4000**

- \* LONG-TIME SETTING (Ir) = 1.0  
\*\* LONG-TIME SETTING (Ir) = 0.9  
\*\*\* LONG-TIME SETTING (Ir) = 0.8

NOTES:

1. INSTALLATION SHALL COMPLY WITH ALL APPLICABLE LOCAL AND NATIONAL ELECTRICAL CODES.
2. REFER TO PRODUCT INSTALLATION DOCUMENTATION FOR SITE PREPARATIONS.
3. FINAL SELECTIONS ARE RESPONSIBILITY OF ENGINEER OF RECORDS BASED ON INSTALLED CONDITIONS AND SCC/SELECTIVE CO-ORDINATION/ARC-FLASH ANALYSIS.

△ FOR Li-Ion BATTERY SOLUTIONS REFER TO DRAWING NO: LIBATTSMGGUL-GVX / LIBSMG95GUL-GVX / LIBSESMGGVXUL.

THIS DRAWING AND SPECIFICATIONS HEREIN ARE THE PROPERTY OF SCHNEIDER ELECTRIC AND SHALL NOT BE COPIED, REPRODUCED OR USED IN WHOLE OR IN PART, AS THE BASIS FOR THE MANUFACTURE OR SALE OF ITEMS WITHOUT WRITTEN PERMISSION FROM SCHNEIDER ELECTRIC. THIS DRAWING IS BASED UPON LATEST AVAILABLE INFORMATION AND IS SUBJECT TO CHANGE WITHOUT NOTICE.

**Schneider**  
Electric

**TITLE:** GALAXY VX  
Input-Output Cabinet Without Backfeed  
Input: 480V AC 3PH 60Hz  
Output: 480V AC 3PH 60Hz 500-1250kVA N+1  
System One Line Diagram-Technical data

**PROJECT:** DRAWINGS **SHEET** 5 OF 5

**DWG NO:** GVXI1250KDNBF2NGS-SD

**DRAWN BY:** RANJITHA 10-NOV-22

**ENGINEER:** LARS LINDHOLM 11-NOV-22

**APPROVED BY:** SOEREN ANDERSEN 11-NOV-22

**REV.** 0

**ANGLE**

**PROJECTION**

**N.A.**